



Calabar

- Rubber hose range for liquid and compressed-air applications
- Typically used for cooling
- Fittings based on push on technology
- Available in black, blue and red

CoreDux rubber hose range

Nominal Hose Size [mm (in.)]	Hose material	Hose Inside dia. [mm (in.)]	Hose outside dia. [mm (in.)]	Minimum inside bend radius [mm (in.)]	Working pressure at -40°C to 20°C (-40°F to 70°F) [bar (psig)]	Minimum Burst Pressure at 20°C (70°F) [bar (psig)]	Temp. Range [°C (°F)]	Bulk hose weight [kg/m (lb/ft)]
DN006 1/4"	Rubber	6,7 (1/4")	13.2 (0.52)	65 (2.56)	24 (350)	97 (1400)	-40 to 88 (-40 to 190)	0.13 (0.09)
DN010 3/8"	Rubber	10 (3/8")	16.4 (0.65)	75 (2.95)	24 (350)	97 (1400)	-40 to 88 (-40 to 190)	0.17 (0.11)
DN012 1/2"	Rubber	13,2 (1/2")	19.6 (0.77)	125 (4.92)	21 (300)	84 (1200)	-40 to 88 (-40 to 190)	0.24 (0.16)
DN016 5/8"	Rubber	16 (5/8")	22.4 (0.88)	150 (5.91)	21 (300)	84 (1200)	-40 to 88 (-40 to 190)	0.27 (0.18)
DN020 3/4"	Rubber	19 (3/4")	26 (1.02)	180 (7.09)	21 (300)	84 (1200)	-40 to 88 (-40 to 190)	0.32 (0.22)
DN025 1"	Rubber	25,4 (1")	32.4 (1.28)	250 (9.84)	14 (200)	56 (800)	-40 to 88 (-40 to 190)	0.4 (0.27)

Compliance

- EN ISO 9001
- EN 16643

Packaging

- Each hose is bagged individually and boxed.
- Longer hoses are coiled, bagged and boxed.
- Labeling with the production date.

Color available

- Black, blue and red
- More colors are available upon request.

Cleanliness

- CoreDux standard cleaning: White room clean

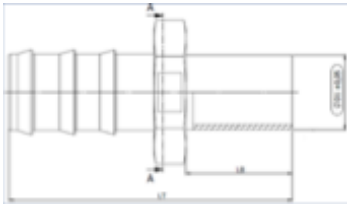
Product tests

- Air underwater pressure test.



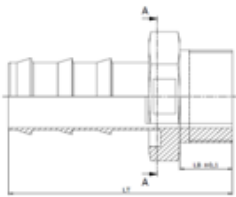
CALABAR

Tube adapters tube weld



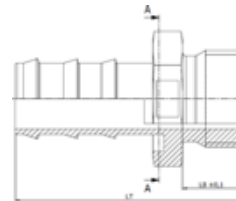
Fitting size	LT [mm (in.)]	LB [mm (in.)]	Min. ID [mm (in.)]	Max. OD [mm (in.)]
1/4" TB	45 (1.77)	19 (0.75)	4.8 (0.19)	6.4 (0.25)
3/8" TB	49 (1.93)	19 (0.75)	7.8 (0.31)	9.5 (0.38)
1/2" TB	53 (2.01)	19 (0.75)	10.5 (0.41)	12.7 (0.5)
3/4" TB	72 (2.83)	27 (1.06)	16.6 (0.65)	19.1 (0.75)
1" TB	85 (3.35)	27 (1.06)	22.1 (0.87)	25.4 (1)

Insert NPT



Fitting size	LT [mm (in.)]	LB [mm (in.)]
1/4" NPT	36 (1.42)	11 (0.43)
3/8" NPT-1	40 (1.57)	12 (0.47)
1/2" NPT	47 (1.85)	14 (0.55)
5/8" NPT	52 (2.05)	15 (0.59)
3/4" NPT	59 (2.32)	16 (0.63)
1" NPT	75 (2.59)	17 (0.67)

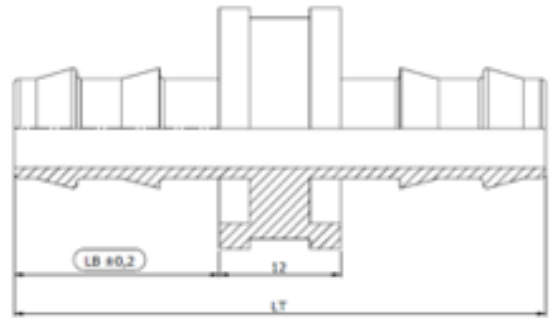
Insert BSPP



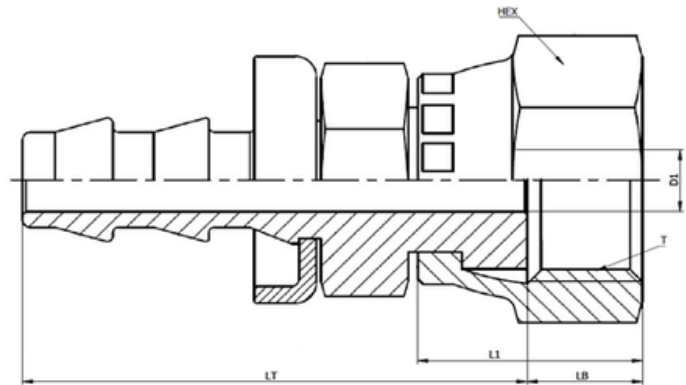
Fitting size	LT [mm (in.)]	LB [mm (in.)]
1/4" BSPP	37 (1.46)	11 (0.43)
3/8" BSPP	42 (1.65)	12 (0.47)
1/2" BSPP	48 (1.89)	14 (0.55)
5/8" BSPP	54 (2.13)	15 (0.59)
3/4" BSPP	61 (2.4)	16 (0.63)
1" BSPP	65 (2.56)	17 (0.67)

Unions

Fitting size	LT [mm (in.)]	LB [mm (in.)]
1/4" Union	48 (1.89)	18 (0.71)
3/8" Union	56 (2.2)	22 (0.87)
1/2" Union	64 (2.52)	26 (1.02)
5/8" Union	74 (2.91)	31 (1.22)
3/4" Union	86 (3.39)	37 (1.46)
1" Union	112 (4.41)	50 (1.97)

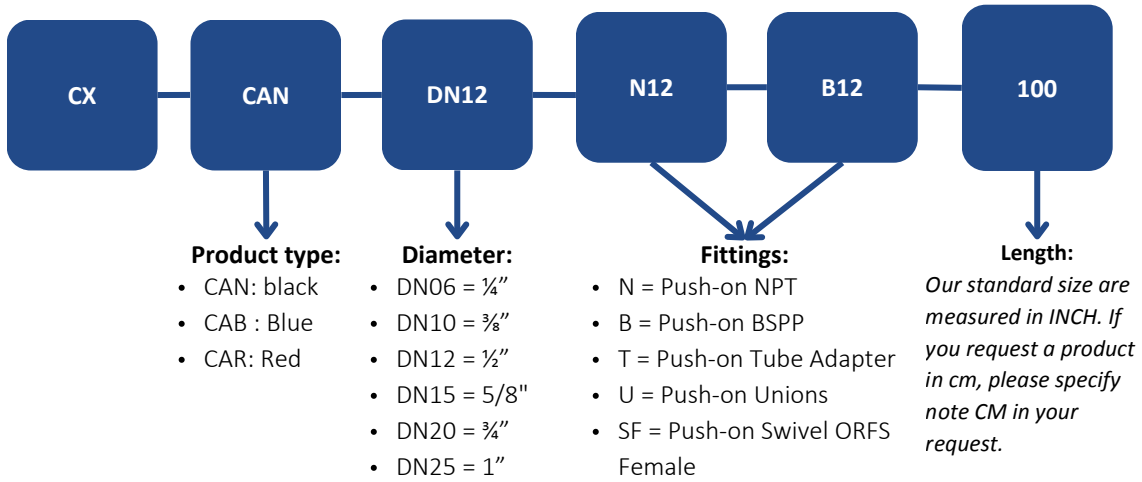


Female Swivel O-ring Face Seal (acc to ISO 12151-1)



Fitting size	LT [mm (in.)]	LB [mm (in.)]	L1 [mm (in.)]	D1 [mm (in.)]	T	Hex [mm (in.)]
1/4" SF	34,7 (1.35)	7,9 (0.31)	16,5 (0.64)	4,5 (0.18)	9/16"x18UNF-2B	17,46 (0.68)
3/8" SF	41,5 (1.62)	8,3 (0.32)	17,75 (0.69)	7,5 (0.29)	9/16"x18UNF-2B	20,64 (0.8)
3/8" SF 1/2"	42,3 (1.65)	11,1 (0.43)	20,25 (0.79)	7,5 (0.29)	9/16"x18UNF-2B	23,8 (0.93)
1/2" SF	45,5 (1.77)	11,1 (0.43)	20,25 (0.79)	10 (0.39)	9/16"x18UNF-2B	23,8 (0.93)
5/8" SF	57,5 (2.24)	13,2 (0.51)	24,9 (0.97)	13,5 (0.53)	9/16"x18UNF-2B	28,58 (1.11)
3/4" SF	57 (2,22)	14,5 (0.57)	28,2 (1.1)	16,5 (0.64)	9/16"x18UNF-2B	34,9 (1,36)
1" SF	76,5 (2.98)	14,2 (0.55)	28 (1.09)	22,1 (0.86)	9/16"x18UNF-2B	41,28 (1.61)

Ordering instructions



Options:

- Labeling requirements.
- Bulk hose and spare fittings on request for service and repairs